

Briggs Little

5008
Country Roving

CANADIAN PRIDE 2010



CANADIAN PRIDE 2010

Materials:

Briggs & Little Country Roving
225g (8 oz.) rolls

Sizes: 38-40 42-44 46-48

Red	1	1	1
Black	1	1	1
Dark Grey	2	2	2
Sheep's Grey	2	2	2
White	3	4	4

Needles:

1PR. 8.0mm (US 12, Eng 0)
1PR. 6.0mm (US9, Eng 4)

Gauge or Tension:

10 sts. and 14 Rows = 10cm (4")

Zipper:

1 Open Ended - Heavy Duty

Directions:

Back:

With 6mm needles cast on

52 sts. for size	38-40
56 sts. for size	42-44
60 sts. for size	46-48

K1, P1 rib for 3" all sizes Inc. 2 sts.
across last row of rib all sizes.
Change to 8mm needles and
follow graph.

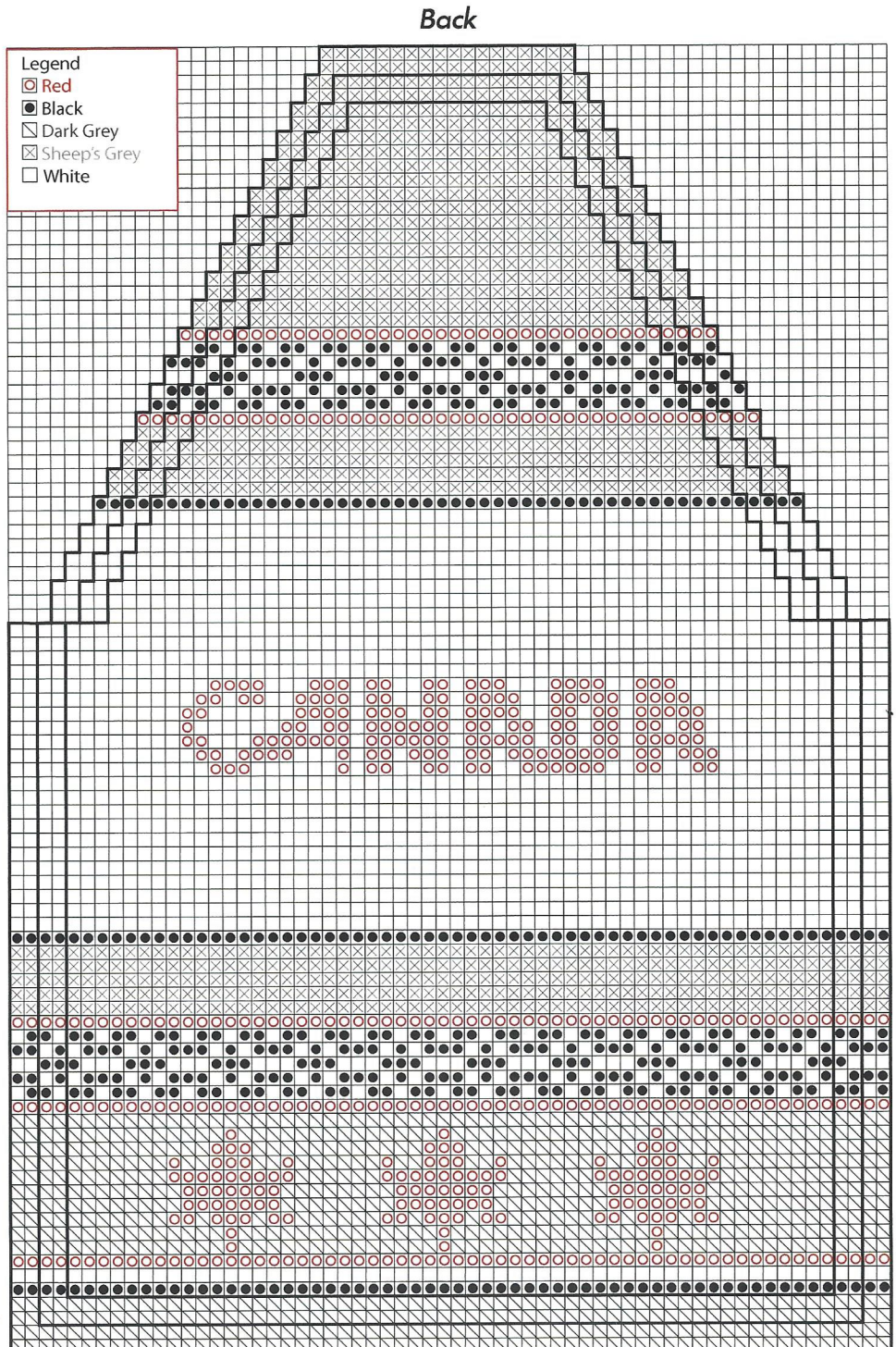
Decreasing:

When decreasing, at the beg. of the
row K. the first st., slip the
2nd st., K. the 3rd st., then pssso.
At the end of row, K. to the last 3 sts.,
then K. 2 sts. Tog. and K. the last sts.

*For a longer sweater work extra rows
above the rib and before the border
pattern. Increase corresponding number
of rows on fronts as well.*

Measurements:

	38-40	42-44	46-48
Body Armhole to Cast on Edge	17"	18.5"	20"
Sleeve Collar to Cast on Edge	29"	30"	31"
Finished Chest	44"	47"	50"



Fair Isle knitting: a method used when 2 or more colours are worked at a time to make a design. The colour not in use is carried every 2-3 sts. on the inside of work.

Abbreviations:

K. – Knit
 P. – Purl
 S. – Slip
 B. – Beginning

Inc. – Increase
 Dec. – Decrease
 St.(s) – Stitch(es)
 Tog. – Together

PSSO – Pass slip stitch over
 cm – Centimeter
 mm – Millimeter

Right Front:

With 6.0 mm needle cast on
 27 sts. for size 38-40
 29 sts. for size 42-44
 31 sts. for size 46-48

K.1, P.1 rib for 3" all sizes. Inc.
 one st. on last row of rib.

Change to 8.0mm needles and
 follow graph.

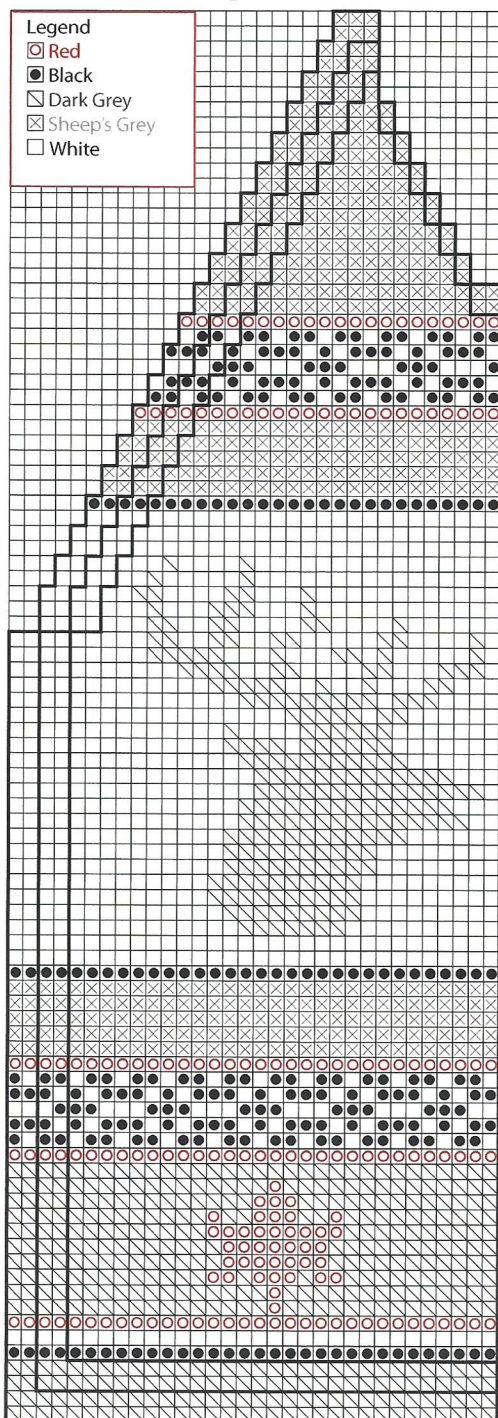
Left Front:

Work to correspond to right front
 and follow graph.

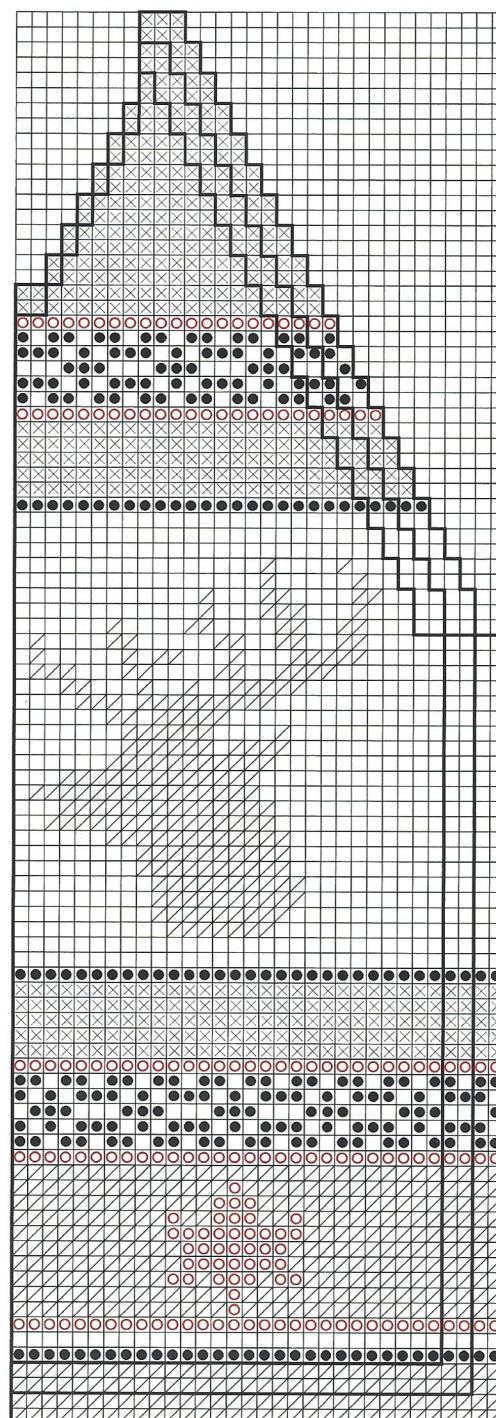
**Helpful hints in using
 Country Roving**

To start, unwind the yarn and
 give it a little twist. It will continue
 to twist on its own after this.
 When joining ends, always start
 at the end of the row. You can
 work the end into the seam. If by
 chance a single strand breaks
 during knitting, just overlap the
 two ends and give it a little twist
 and continue knitting. You may
 use to sew the garment together.
 Take about an 18" length of
 and twist it until it curls up when
 you slack off the tension. This
 becomes very strong.

Right Front



Left Front



Sleeve(s):

With 6.0 mm needles cast on :

28 sts. for size 38-40

30 sts. for size 42-44

32 sts. for size 46-48

K.1, P.1 rib for 3" all sizes

Inc. 4 sts. across last row of rib.

Change to 8.0mm needles and follow graph. For extra sleeve length work extra rows above the rib and before the border pattern.

Collar:

Cast on 2 sts. with 8mm needles.

First row: K.

Second row: Inc. 1 st. in first st., k. to end of row.

Repeat last row to 8 sts. on needle

Next Row: Inc. in first st, K. to end of row.

Repeat last two rows to 17 sts. on

needle for small size, and 18 sts. for

medium and large K. even for

36 rows for small size

38 rows for medium size

40 rows for large size

Make sure you start decreasing at

the same edge. As other sides of

collar K. two tog at beg of row, K. to

end of row. Next row: K. Repeat last

2 rows to 8 sts. on needle. Now, K.

two tog at the beg. of every row til 2

sts. remain.

Cast off loosely.

Hint

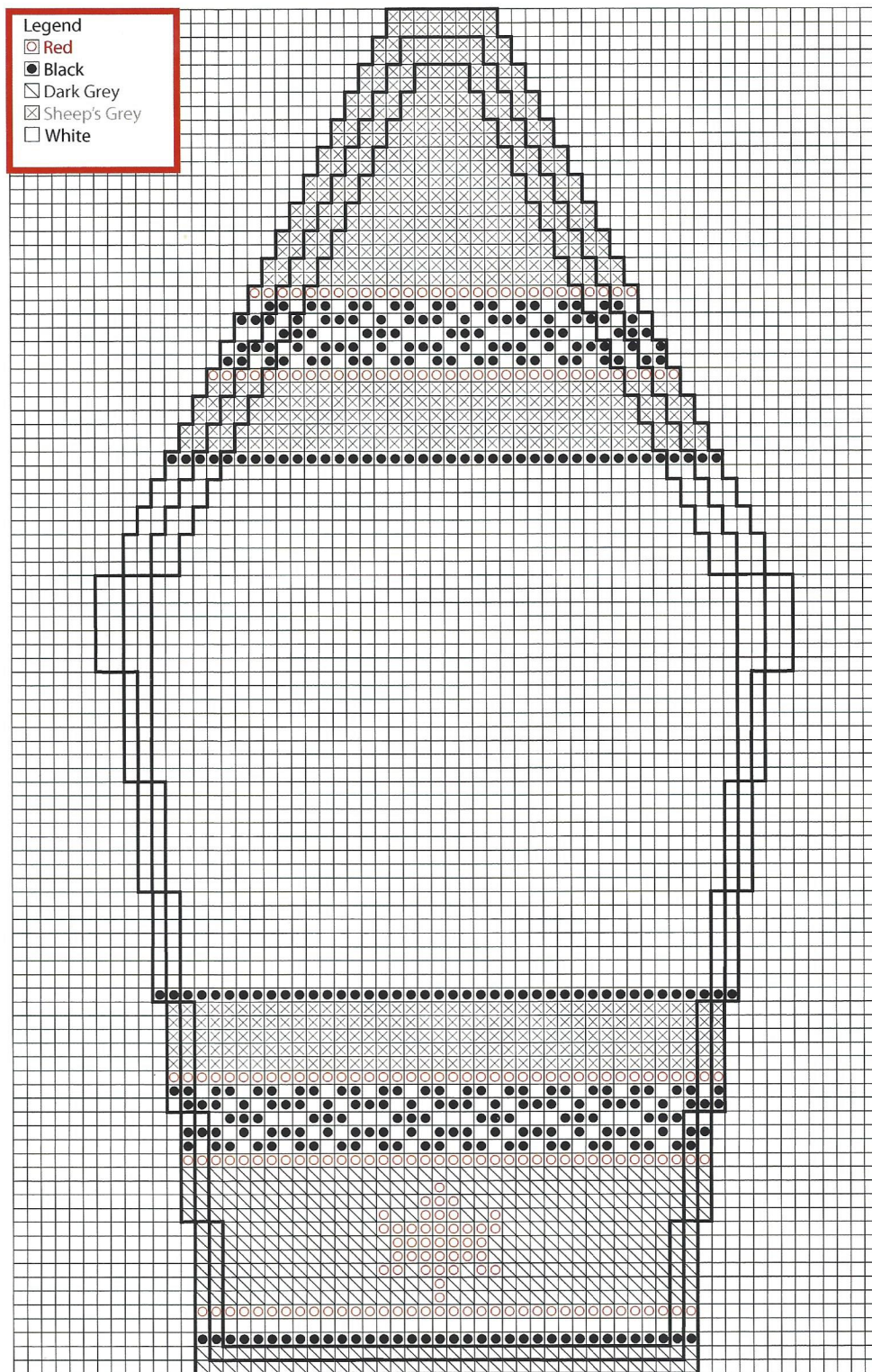
To maintain shape lay flat, do not

hang sweater. For washing use

Eucalan, following instructions. Use the

spin cycle in washer, lay flat to dry.

Sleeve(s)



Briggs & Little Woolen Mill

3500 Route 635, HarveyYork County, NB Canada E6K 1J8

Phone 506 366-5438 Order Desk 1-800-561-YARN

Fax 506 366-3034 Email yarninfo@briggsandlittle.com

For a free download of this and other patterns check out

www.briggsandlittle.com

